



Learner Centric Advanced Manufacturing Platform



General Introduction

TKNIKA

(Project coordinator)



Co-funded by
the European Union



Learner Centric Advanced Manufacturing Platform

The LCAMP project aims to support and empower regional Advanced Manufacturing Centres of Vocational Excellence (CoVE) to become more resilient, innovative and better equipped to train, upskill, and reskill young and adult students to successfully face the digital and green transitions.

In the context of LCAMP you will find from the development of skills and competences to their provision; in addition to the design of learning pathways, micro-credentials, active methodological approaches, articulation of services and innovation for SMEs.



**Co-funded by
the European Union**

The European Commission's support for the production of this publication does not constitute an endorsement of the contents, which reflect the views only of the authors, and the Commission cannot be held responsible for any use which may be made of the information contained therein.

CONSORTIUM

The LCAMP consortium is composed of 20 full partners from 10 countries, of which 9 are educational organisations, 7 are industrial companies and 4 are VET and industrial associations. The consortium is also supported by 60 associated partners.



ICAMP

Learner centric Advanced
Manufacturing Platform



Co-funded by
the European Union

20 Full Partners



VET providers



Industrial Associations,
VET Associations

60 associate partners



VET/HVET Centres and
VET Associations



Companies, Associations of
Companies, R&D centres



Regional Education Bodies,
European Networks

CANADA

- Camosun College
- 2
- 6
- 2

United Kingdom

- 1

BELGIUM

- EARLALL
- 1
- 4

FRANCE

- CMQE
- Mecanic Vallée
- 4
- 6
- 3

SPAIN

- TKNKA
- CIFP Miguel Altuna
- AFM
- 3
- 7
- 3

ITALY

- MADE
- AFIL
- 1

NETHERLANDS

- ROC DaVinci College
- 2

GERMANY

- DHBW
- FORCAM
- 4
- 1

SWEDEN

- Curt Nicolin Gymnasium
- Simumatik
- 1

SLOVENIA

- TSCM
- SKUPNOST SSV

TURKEY

- GEBKİM VET
- KPDonE
- GEBKİM OIZ
- 1
- 3
- 3

MALTA

- Knowledge Innovation Centre

Vision, mission and strategic goals



VISION

LCAMP aims at becoming the European reference platform for knowledge, generation and exchange, collaboration and service provision for VET/HVET centres and companies working in the Advanced Manufacturing sector.



MISSION

Collaboration and networking between VET/HVET centres and companies/company associations working in the Advanced Manufacturing sector to reduce skills gaps in the industry and to transfer knowledge between VET centres and companies.



STRATEGIC OBJECTIVES

- ☐ To create a Trends Observatory for AM
- ☐ To develop mechanisms for Skills definition, learning paths, microcredentials...
- ☐ To Set up an Open Innovation Community
- ☐ To run a Collaborative Learning Factory
- ☐ To promote Synergies with other EU initiatives
- ☐ To position the platform in Europe
- ☐ To make the platform self-sustainable



Learner centric Advanced
Manufacturing Platform

LCAMP will support and empower regional AM CoVEs to become more resilient, innovative, and better equipped to train, upskill, and reskill young and adult students to

successfully face the digital and green transitions. LCAMP supports regions grow and be more competitive through their VET systems.



Co-funded by
the European Union

WP2 LCAMP Alliance

Alliance of Learner centric Advanced Manufacturing CoVEs

WP3 Observatory

Learner centric Advanced Manufacturing Observatory

WP4 Open Innovation Community

Promote applied research and development projects, mainly between CoVEs and SMEs

WP7 VET-SME connection

Accelerate the delivery of trainings on advanced manufacturing for SMEs by linking digital transformation journeys with trainings delivery from Vet centres.

WP6 Collaborative Learning Factory- CLF

Collaborative Learning Factory for Industry 4.0 technologies' absorption

WP5 Learner centric training for AM

Learner centric training for Advanced Manufacturing

WP2 to 7
HIGH-VALUE SERVICES FOR
ADVANCED
MANUFACTURING COVES
OFFERED THROUGH THE
ONLINE PLATFORM
FOR LEARNER
CENTRIC ADVANCED
MANUFACTURING
(WP8)

WP1 Project management, quality assurance and risks management

WP9 Dissemination and exploitation

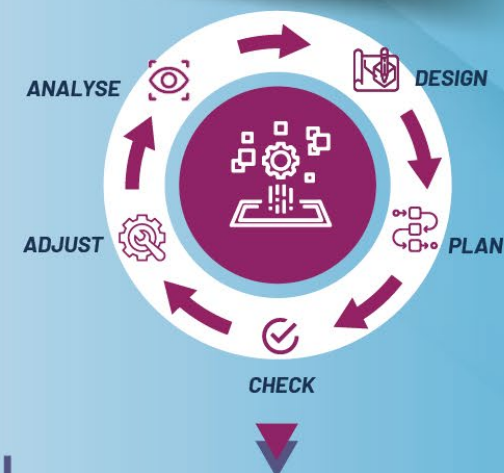
* Wp1 and Wp9 Are transversal and apply to the all wps

WP8



PLATFORM for Learner Centric Advanced Manufacturing

THE PERMANENT EUROPEAN PLATFORM OF VOCATIONAL EXCELLENCE FOR ADVANCED MANUFACTURING WILL PROVIDE A ONE-STOP-SHOP SERVICE FOR ACCESSING ALL SERVICES, DATA AND INFORMATION GENERATED BY THE PROJECT.



WP10



Action Plan

Which will ensure the sustainability of the project after the end of the funding

ACTIVITIES

LCAMP platform for Advanced Manufacturing aims to be a digital one-stop-shop for accessing all services, data and information produced during the life's project:



A skills and jobs observatory on Advanced Manufacturing

Building an observatory on advanced manufacturing tendencies from a VET perspective.



An open innovation community

A community of best practices to articulate applied research actions that underpin the activities of the CoVes.

In cooperation with industry, the Vocational Education and Training sector and regions.



A Learner centric training for Advanced Manufacturing

Developing teaching and learning content on Industry 4.0 -specific qualifications, skills assessment, a database of I4.0 specific courses and micro-credentials, integrated learning pathways tool for LLLs and develop and provide micro-credentials for new and existing Industry 4.0 specific qualifications.



Advanced Manufacturing learning factories

Factory labs for advanced manufacturing training (in VET).



SME – VET connection

- Create a catalogue of training and offer them to SMEs in all partner countries related to the ADMA framework and transition model.
- Develop a support framework for SMEs to accelerate their digital and green transformation

COOPERATION WITH KEY STAKEHOLDERS



LCAMP- Learner Centric Advanced Manufacturing CoVEs Alliance

- A network of VET centres and companies from the AM sector that will assure the sustainability of the platform in the form of a Skills Alliance
- LCAMP Alliance will sign agreements of cooperation with other networks and organisations (regional authorities, national VET/HVET centres, learning factories, SMEs active in AM, employer associations etc.)



ADMA TranS4MErs

- Connection with the EU initiative ADMA TranSf4MErs to support SMEs to accelerate their digital transformations.
- LCAMP adopts its methodology and joins forces to deliver advanced training for SMEs.

TARGET GROUPS



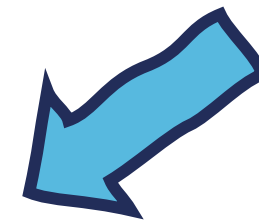
VET CENTERS



INDIVIDUAL LEARNERS, STUDENTS AND LLL



SMES, LARGE COMPANIES, INDUSTRIAL ASSOCIATIONS



HOW CAN STAKEHOLDERS BENEFIT FROM LCAMP?

VET CENTERS

- Join the LCAMP Alliance
- Join the Collaborative Learning Factory environment. Get support to create your own i4.0 labs
- Open training material
- Get support from the LCAMP Open Innovation Community to foster applied research

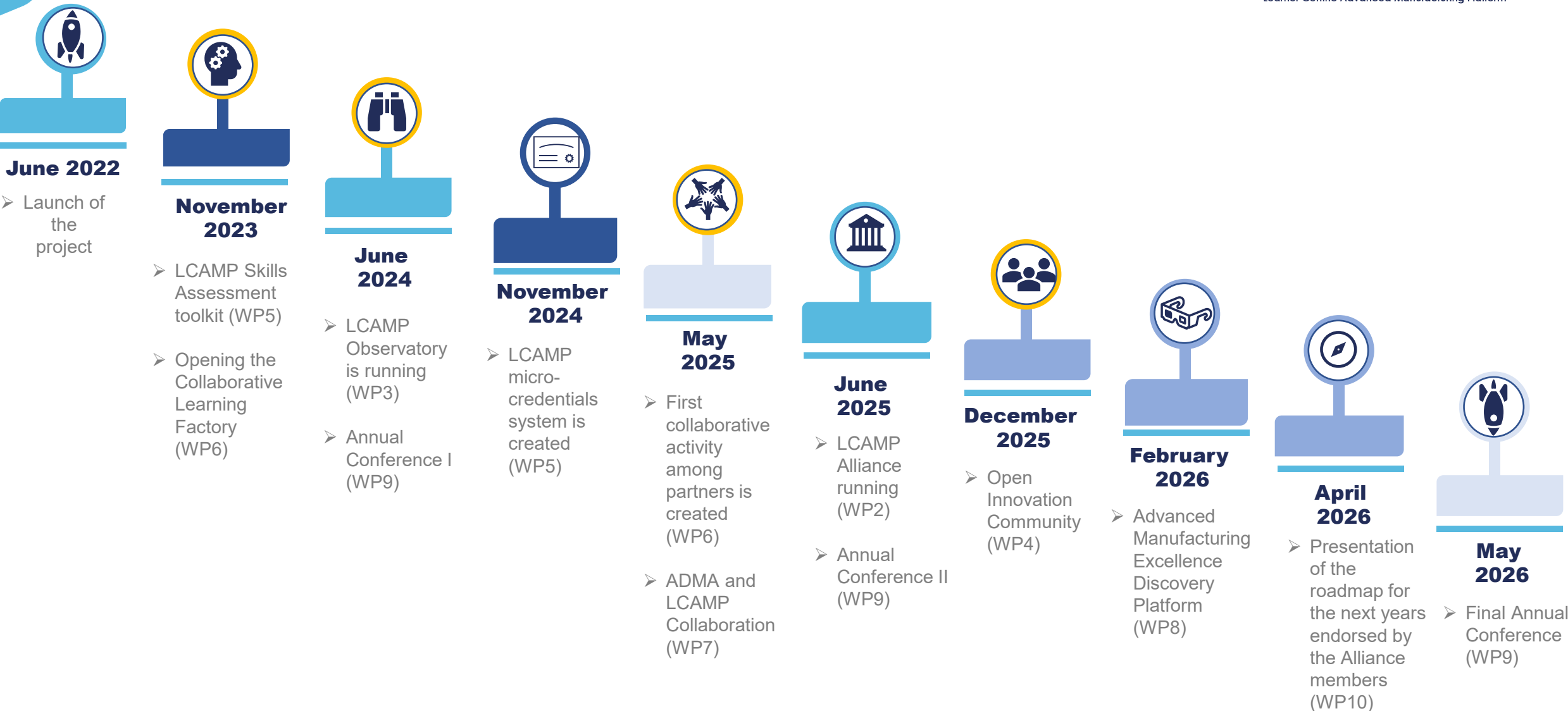
INDIVIDUAL LEARNERS, STUDENTS AND LIFELONG LEARNING

- Learning pathways,
- Skill assessments
- Microcredentials
- Upskilling opportunities
- (Regional) Training catalogues

SMES, LARGE COMPANIES, INDUSTRIAL ASSOCIATIONS

- Links with ADMA TranS4MErs
- Get support for upskilling actions
- Technical services, applied research opportunities

TIMELINE





Learner Centric Advanced Manufacturing Platform



uziarsolo@tknika.eus / unai@maltuna.eus

#LCAMP_EU



www.lcamp.eu



[@LCAMP_EU](https://twitter.com/LCAMP_EU)



LCAMP
Learner Centric Advanced
Manufacturing Platform for
CoVEs



Co-funded by
the European Union